



Product Service

CERTIFICATE

No. Z2 16 02 51485 01467

**Holder of Certificate: Astec International Limited
- Philippine Branch**

3rd & 4th Floor, Techno Plaza One Bldg
#18 Orchard Road
Eastwood City Cyberpark, Bagumbayan
1110 Quezon City
PHILIPPINES



Certification Mark:



**Product: Switch mode power supplies
(Switch Mode Power Supply for Building-in)**

The product was tested on a voluntary basis and complies with the essential requirements. The certification mark shown above can be affixed on the product. It is not permitted to alter the certification mark in any way. In addition the certification holder must not transfer the certificate to third parties. See also notes overleaf.

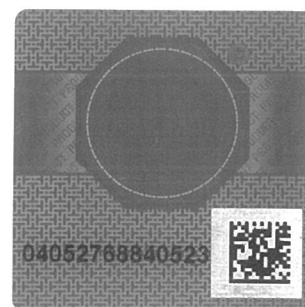
Test report no.: 68230904506

Valid until: 2021-02-24

Date, 2016-02-25

Page 1 of 3


(Jimmy Huang)



**CERTIFICATE**
No. Z2 16 02 51485 01467**Model(s):** LPT101-M, LPT102-M, LPT103-M, LPT104-M

Parameters:

Rated Input : 100-250VAC, 50/60Hz, 1.9A or
127-300VDC, 1.9A

Rated Output : Total maximum continuous output
power:
130W with 200LFM forced-air cooling,
80W with natural convection cooling.
(See detail output rating in page 3)

Construction : Built-in

Protection Class : I

Degree of Protection : IPX0

Remarks :

- When installing the equipment, all requirements of the mentioned standard must be fulfilled.
- Refer to installation and operation instructions for details of operating temperature and loading condition.
- Clearance was evaluated for operating altitude up to 4000m above sea level.
- Built-in type equipment, suitable enclosure should be provided in end system.
- These power supplies have been evaluated according to EN 60601-1:2006/A1:2013 with the following conditions:
 1. The output was not evaluated as patient connected circuits.
 2. Compliance with the requirements for EMC shall be evaluated for the end use product.
 3. These power supplies have been investigated only as a component part for use in equipment where the suitability of the combination is subject to end product investigation.
 4. These power supplies are designed to be protectively earthed. Earthing connection and continuity test shall be checked in end product.
 5. These power supplies must be installed in accordance with the instruction manual.
 7. The leakage current test shall be checked in end product.
 8. The risk management requirements of the standard were not addressed.

Tested according to: EN 60950-1:2006/A2:2013
EN 60601-1:2006/A1:2013**Production Facility(ies):** 62777, 28532

Page 2 of 3

CERTIFICATE
No. Z2 16 02 51485 01467



Product Service

Output Voltage, Current and Power Matrix:

OUTPUT RAILS	VOLTAGE (V)	CURRENT (A)		POWER (W)	
		FORCED-AIR	CONVECTION	FORCED-AIR	CONVECTION
V1 ¹⁾²⁾³⁾	2.0 to 6.5	18.0	13.0	108	70
V1 ¹⁾²⁾³⁾	6.6 to 13.2	9.0	6.0	108	70
V1 ¹⁾²⁾³⁾	13.3 to 16.5	7.2	5.0	108	70
V2 ¹⁾²⁾	2.0 to 13.2	9.0	5.0	108	60
V2 ¹⁾²⁾	13.3 to 16.5	7.2	4.0	108	60
V2 ³⁾	21.6 to 28.8	3.0	1.5	72	36
V3 ¹⁾³⁾	7.2 to 13.2	2.3	1.0	28	15
V3 ¹⁾³⁾	13.3 to 16.5	1.5	1.0	28	15
V3 ²⁾	-7.2 to -13.2	2.3	1.0	28	15
V3 ²⁾	-13.3 to -16.5	1.5	1.0	28	15

- 1) Output rating applied for LPT101-M
- 2) Output rating applied for LPT102-M and LPT103-M
- 3) Output rating applied for LPT104-M